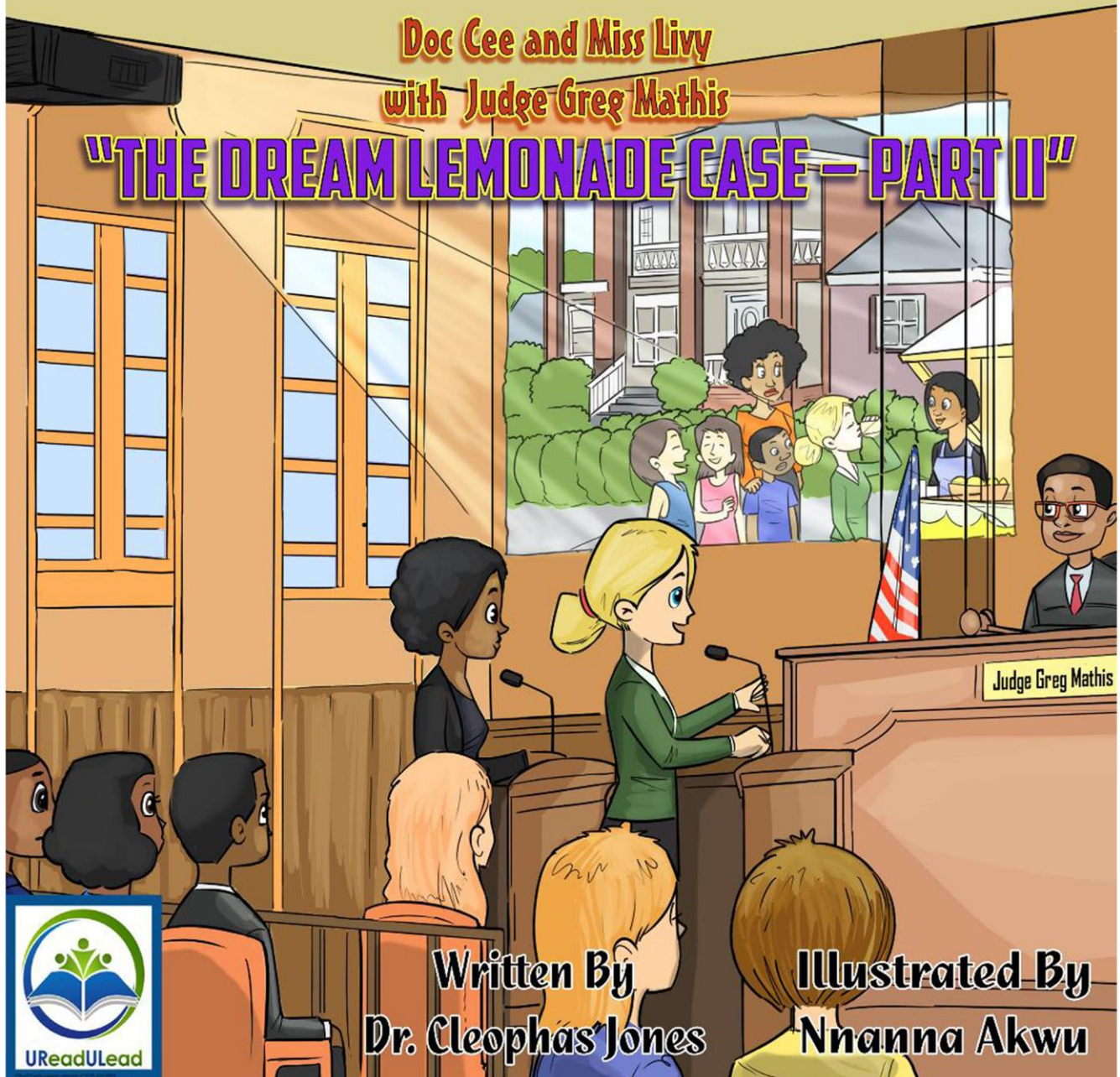


Doc Cee and Miss Livy
with Judge Greg Mathis

"THE DREAM LEMONADE CASE - PART II"



UReadULead

Written By
Dr. Cleophas Jones

Illustrated By
Nnanna Akwu

ISBN 978-1-54395-249-0

Acknowledgements

First and foremost, I pause to recognize the Almighty for giving me grace and writing talent. I thank my wife, DeKisha, and my children, lil' Cleophas and Jasmine, AKA "Jazzy", for their inspiration and patience while I completed this reading selection.

Foreword and Foresight

I first met Judge Greg Mathis on March 22, 2007, in Atlanta, Georgia, thanks to a college alumni and good friend of mine, Dr. Mark Stevens. Upon meeting the Judge, I shared with him a blueprint of a children's book I had created, which was about him. I can't recall everything we discussed that evening, but I clearly remember the Judge saying, "Get the book published." Well, after the passing of some years and the completion of the first Judge Mathis book, now comes a new series of books in which the legal system is presented to an audience in a more dynamic, colorful format. One day this book will become an animated series.

This book is for today's readers and tomorrow's leaders.

It is our duty to continue to motivate and inspire children to read and lead so that they become educated, economically empowered, and ultimately, entrepreneurs.



"UReadULead"



Follow me on Twitter at Cleophas O. Jones@ureadulead, or visit me at www.ureadulead.com, or email me at ureadulead@aol.com

Doc Cee and Miss Livy with Judge Greg Mathis “The Dream Lemonade Case – Part II”

Book Summary

What is the judicial system and why is it important? What is a court room? What is the purpose of a court judge? Have you ever met a court judge?



In this exciting and enlightening URadULead selection, Doc Cee and Miss Livy begin learning about what happens in civil court cases from an expert and their mentor, Judge Greg Mathis. This book is Part II of the first story in which Doc Cee and Miss Livy find themselves sitting in a courtroom and carefully observing a court case that must be decided by Judge Greg Mathis.

As you read the story, you pretend to be the judge, and you decide, based on the facts, the person whom you believe should win this court case. Will you decide in favor of the plaintiff or the defendant? Have fun reading the story and see if you made the same decision as Judge Greg Mathis. Be sure to read Part I of the first book of this story if you have not already done so.

Character Trait(s)

Respectful and Responsible

In life, you will have different viewpoints from other people and you will have disagreements with others. Being respectful and responsible are two character traits that can allow you to settle differences and disagreements without being confrontational.

You are respectful when you treat others nicely and fair. You are responsible when you do the things you are expected to do. This can be seen in the story. Everyone in the courtroom obeys the courtroom rules and displays good manners at all times. Even the persons in the story who are in disagreement with each other treat each other with respect and dignity.

So, are you respectful and responsible? Do you treat your parents, family members, friends, and others with respect and dignity at all times? You have been taught to be respectful and responsible, and this is what is expected of you, whether at home, at school, or in your community. Show people that you possess these two traits and you will find yourself being able to communicate and solve differences and disagreements that you have with others more easily.

Who Are Doc Cee and Miss Livy?

Doc Cee and Miss Livy are really cool twins who share exciting adventures at home, in school, and anywhere they end up going.

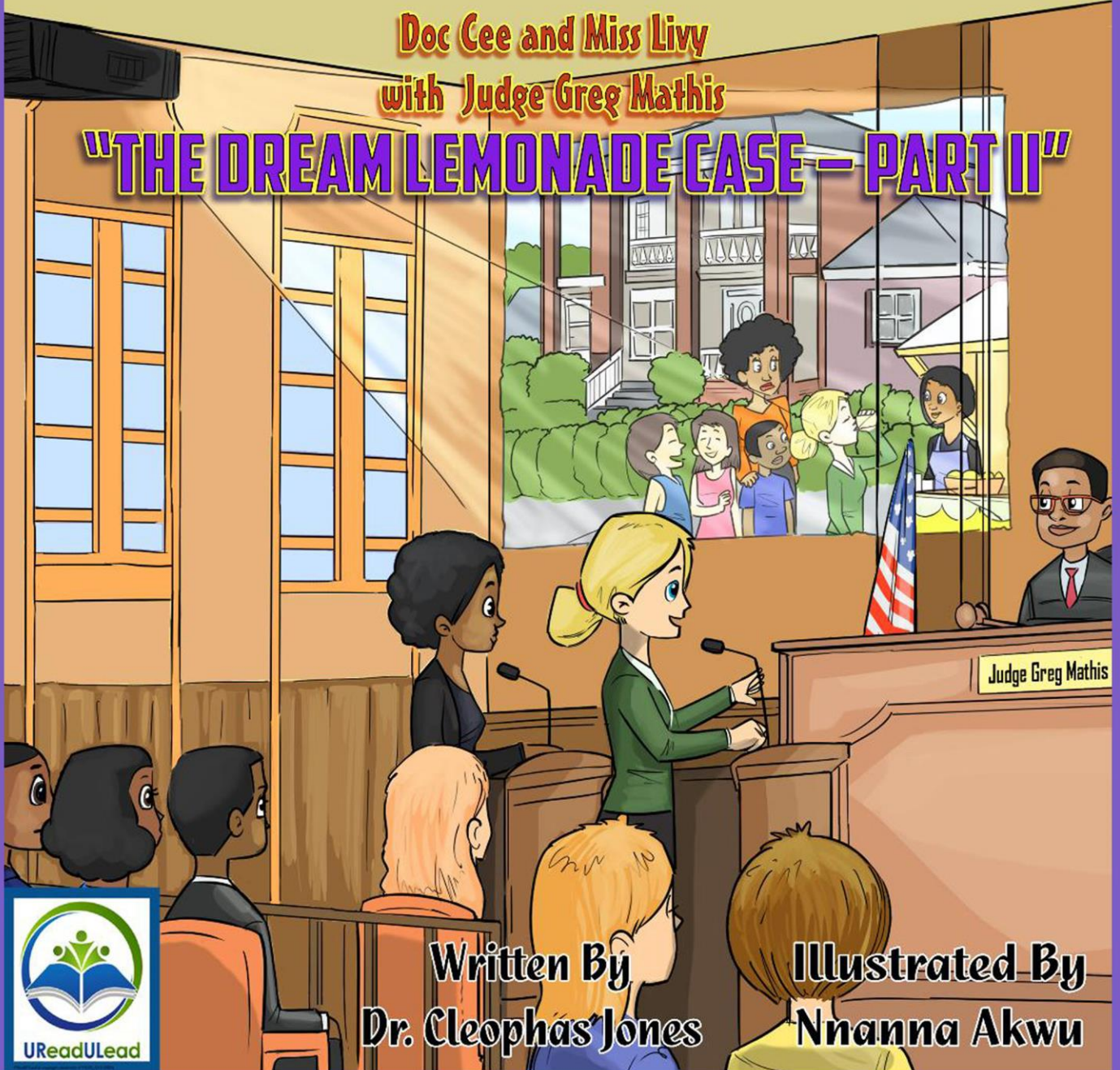
Doc Cee, the elder twin, is a genius known worldwide for his advanced math and science skills. He is highly intelligent, enterprising, and athletically inclined. A natural leader, he finds himself at the forefront of situations. And he always wears his signature hat!



Miss Livy is the loveable, adorable twin sister who uses her wit to aid her brother and friends in their adventures. Like Doc Cee, she is academically gifted and athletically inclined. She loves reading, science, law, music, and gymnastics. Sometimes, she and her friends engage in learning adventures of their own.

Doc Cee and Miss Livy
with Judge Greg Mathis

"THE DREAM LEMONADE CASE – PART II"



UReadULead

Written By
Dr. Cleophas Jones

Illustrated By
Nnanna Akwu



**Judge Mathis then asked the defendant to speak.
The defendant looked so dignified.
“The plaintiff has stated her side of this case;
Now it’s your turn, so let’s hear your side.”**



**The defendant leaned toward the mic and she spoke,
She said, "I am Jasmine LeFace.
Thank you Judge Mathis; I'm in here today,
To present the true facts in this case."**

UReadULead Favorites

Buy these favorite books and more at, www.ureadulead.com

